

System 9000

Improves network and application performance by 100 – 400+%

Bandwidth intensive applications are playing an increasingly important role in enterprise productivity and cost savings. Enterprise Resource Planning (ERP), Customer Relationship Management (CRM), Intranets and Extranets have become mainstream business processes within enterprises. Expand Networks' ACCELERATORS enable faster deployments of new applications by supercharging enterprise network performance. By using the patented Enterprise Caching Technology (ECT Technology), the ACCELERATOR System 9000 provides an immediate 100–400+% increase in network performance, measured in network capacity, throughput and speed increases across all applications and users.

Expands capacity on all types of networks

The System 9000 extends the benefits of ECT Technology to a range of diverse high-speed networks including: Private Line, Frame Relay, ATM, Ethernet services and high speed IP-VPNs. It is the first bandwidth optimization device to support Gigabit Ethernet and scales up to OC-3/STM-1 throughput and beyond. The System 9000 sits behind the service provider's demarcation device, and therefore can work with existing data center devices including IP Virtual Private Networks (VPN) and encryption. Organizations that rely on managed data services are now able to accelerate their data services without WAN equipment modification.

Gigabit platform for large enterprise data centers

While data communication pipes are getting larger, they will never be fast enough. The System 9000 addresses the growing need for cost-effective bandwidth expansion of large enterprises. It supports high-speed data links that connect critical hub and aggregation sites; and high-speed data centers managing hundreds of remote sites. This modular system is custom built, pre-configured and tested according to the end user's specific needs. The System 9000 includes an integrated Gigabit Ethernet switch and two to four ACCELERATOR modules. It is the ideal central site device that complements large-scale deployments of the ACCELERATOR 1800 and 4800 Series in remote locations.

System 9000

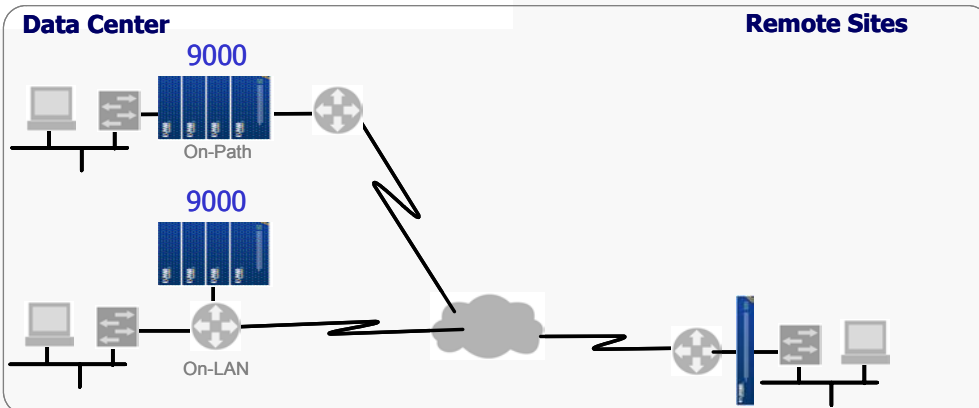
- Industry's first high speed data center solution
- Supports unprecedented speeds of up to 200 Mbps and up to 1,500 remote sites
- Preconfigured for data center deployment
- Network-wide application traffic management with ExpandView™

Rapid deployment, instant results

The System 9000 can be seamlessly integrated into existing networks, to immediately accelerate all IP traffic either On-Path (on the link between the LAN segment and the router) or On-LAN (as any other LAN element). The System 9000 was designed for data center-grade lights out operation. Its unique design, with no moving parts; auto-bypass functionality; and its support for Hot Standby Router Protocol (HSRP, IETF RFC-2281) as well as Virtual Router Redundancy Protocol (VRRP, RFC-2338); guarantee unsurpassed uptime and availability. Remote site "keep-alive" and packet loss recovery features ensure greater predictability of network performance and offer data-surge protection.

Robust monitoring and management capabilities

The System 9000 is supplied with an ExpandView™ server license for centralized monitoring of the entire network and the applications running on it.

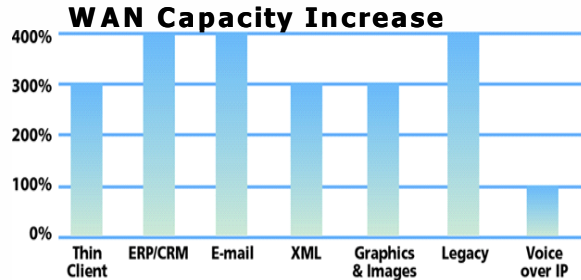


System 9000

With the System 9000's Cisco-like Command Line Interface; a powerful Web User Interface; and support for third-party network management platforms; the device has the flexibility to be integrated into any data center environment. The System 9000 also provides extensive performance and fault management functions like SNMP, RMON/RMON II and priority queuing. This built-in-functionality not only eliminates the need for costly probes, but also assures basic traffic policies, making network deployments easier to manage and maintain.

Application Traffic Management System

ExpandView delivers "application insurance" by automatically discovering and classifying more than 100 enterprise applications while detecting performance problems relating to degraded WAN conditions and proactively fixing them for optimal application delivery across the network. Detailed graphs and reports, easy-to-use QoS templates and tight integration with the System 9000 and remote ACCELERATORS make ExpandView the ideal Application Traffic Management System for ensuring optimal application performance over the WAN.



Technical Specifications

Physical

Width x Height x Depth:

Weight: configuration dependant

Environment

Temperature: 32-122° F (0-50° C)

Humidity: 0 to 90% (non condensing)

Reliability

- ISO 9001 certified manufacturing facility
- Transparent auto-bypass
- No moving parts
- Support for HSRP (RFC-2281) and VRRP (RFC-2338)
- Error/packet drop correction for non-reliable links
- Layer 3 Load Balancing

Interfaces

LAN: Ethernet Auto-sensing 10/100/1000 BaseT

Management Interfaces: Ethernet Auto-sensing 10/100/1000 BaseT

Console & Auxiliary: RS-232C (DB-9)

System Maximum Capabilities

- 200 Mbps supporting up to 1,500 IP Tunnels

Power Rating

Power Supply: Redundant Auto-sensing 100/230 Volt

AC Line Frequency: 50/60 Hz

Local/Remote Management Features

- Status LEDs
- Power
- Port activity (Active, Ready)
- Advanced Cisco-like Command Line Interface (CLI) accessible via Telnet,
- Console, Dial Up
- SNMP V1.0 (MIB II) and Private MIB support
- Web-based User Interface
- RMON/RMON II
- TFTP software upgradeable

Security and Logging Features

- Authentication and authorization: RADIUS (RFC2138), TACACS+, internal database
- Syslog event logging
- Email alerts from log
- SNTP – Simple Network Time Protocol

Traffic Management Features

- IP Tunnel flow control
- Queuing: FIFO, Weighted Fair, Priority and Custom Queuing

Specifications subject to change without prior notice.

Expand Networks
103 Eisenhower Parkway
Roseland, NJ 07068
Telephone: +1-888-892-1250
Telephone: +1- 973-618-9000
Fax: +1- 973-618-9254
www.expand.com
info@expand.com



(Expand Networks, System 9000, ACCELERATOR 6800, ACCELERATOR 4800, ACCELERATOR 4002, ACCELERATOR 4000, ACCELERATOR 2800, ACCELERATOR 2750 and ACCELERATOR 1800 are trademarks of Expand Networks, Inc. All other trademarks are the property of their respective owners.)