

## ACCELERATOR 6800 Series

### Improves network and application performance by 100–400+%

Bandwidth intensive applications are playing an increasingly important role in enterprise productivity and cost savings. Enterprise Resource Planning (ERP), Customer Relationship Management (CRM), Intranets and Extranets have become mainstream business processes within enterprises. Expand Networks' ACCELERATORS enable faster deployments of new applications by supercharging enterprise network performance. By using the patented Enterprise Caching Technology (ECT Technology), the ACCELERATOR 6800 Series provides an immediate 100–400+% increase in network performance, measured in network capacity, throughput and speed increases across all applications and users.

### Expands capacity on all types of networks

The ACCELERATOR 6800 Series extends the benefits of ECT Technology to a range of diverse high speed networks including: Private Line, Frame Relay, ATM, Ethernet services and high speed IP-VPNs. It is the first bandwidth optimization appliance to support Gigabit Ethernet and scales up to OC-3/STM-1 throughput and beyond. The ACCELERATOR 6800 Series sits behind the service provider's demarcation device, and therefore can work with existing data center devices including IP Virtual Private Networks (VPN) and encryption. Organizations that rely on managed data services are now able to accelerate their data services without WAN equipment modification.

### Gigabit platform for large enterprise data centers

While data communication pipes are getting larger, they will never be fast enough. The ACCELERATOR 6800 Series addresses the growing need for cost-effective bandwidth expansion of

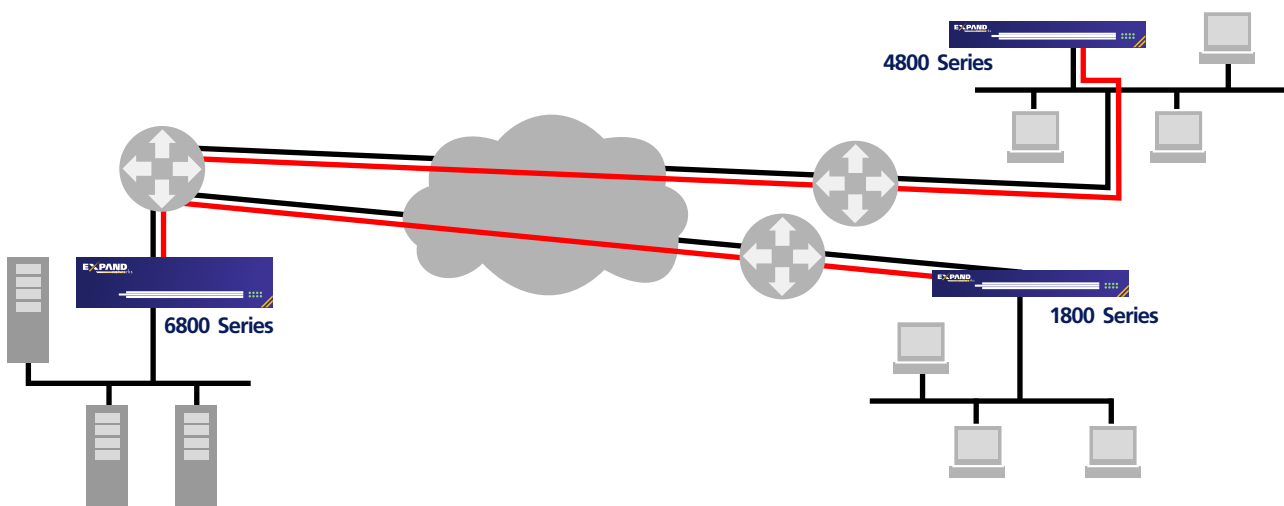
### ACCELERATOR Benefits

- Improves network and application performance by 100 – 400+%
- Expands capacity on all types of networks
- Gigabit platform for large enterprise data centers
- Robust Monitoring and Management Capabilities

large enterprises. It supports high-speed data links that connect critical hub and aggregation sites; and high-speed data centers managing hundreds of remote sites. The 2U device can be racked-and-stacked for even larger scalability. It is the ideal central site device that complements large-scale deployments of ACCELERATOR 1800s and 4800s in remote locations.

### Rapid deployment, instant results

The ACCELERATOR 6800 Series can be seamlessly integrated into existing networks, to immediately accelerate all IP traffic either On-Path (on the link between the LAN segment and the router) or On-LAN (as any other LAN element). The ACCELERATOR 6800 Series was designed for data center-grade lights out operation. Its unique design, with no moving parts; auto-bypass functionality; and its support for Hot Standby Router Protocol (HSRP, IETF RFC-2281) as well as Virtual Router Redundancy

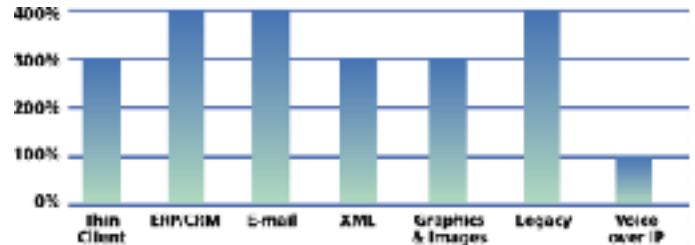


Protocol (VRRP, RFC-2338); guarantee unsurpassed uptime and availability. Remote site "keep-alive" and packet loss recovery features ensure greater predictability of network performance and offer data-surge protection.

## Robust monitoring and management capabilities

With the ACCELERATOR 6800 Series' Cisco-like Command Line Interface; a powerful Web User Interface; and support for third-party network management platforms; the device has the flexibility to be integrated into any data center environment. The ACCELERATOR 6800 Series also provides extensive performance and fault management functions like SNMP, RMON/RMON II and priority queuing. This built-in-functionality not only eliminates the need for costly probes, but also assures basic traffic policies, making network deployments easier to manage and maintain.

## Network Capacity Increases



## SPECIFICATIONS

### Physical

Width x Height x Depth:  
17" x 3.5" x 14.92"  
(43.2 cm x 8.8 cm x 37.9 cm)  
Weight: 14.7 lbs (6.7 kg)

### Environment

Temperature: 32-122° F (0-50° C)  
Humidity: 0 to 90% (non condensing)

### Reliability

- ISO 9001 certified manufacturing facility
- Transparent auto-bypass
- No moving parts
- Support for HSRP (RFC-2281) and VRRP (RFC-2338)
- Error/packet drop correction for non-reliable links

### Interfaces

LAN: Ethernet Autosensing 10/100/1000 BaseT  
Management Interfaces:  
Console & Auxiliary: RS-232C (DB-9)

### System Acceleration Capabilities

- 2-45 Mbps supporting up to 100 IP Tunnels

### Power Rating

Power Supply:  
Single Autosensing 100/230 Volt  
AC Line Frequency: 50/60 Hz

### Local/Remote Management Features

- Status LEDs
  - Power
  - Port activity (Active, Ready)
- Advanced Cisco-like Command Line Interface (CLI) accessible via Telnet, Console, Dial Up
- SNMP V1.0 (MIB II) and Private MIB support
- Web-based User Interface
- RMON/RMON II
- TFTP software upgradeable

### Security and Logging Features

- Authentication and authorization: RADIUS (RFC 2138), TACACS+, internal database
- Syslog event logging
- Email alerts from log
- SNTP-Simple Network Time Protocol

### Traffic Management Features

- IP Tunnel flow control
- Queuing: FIFO, Weighted Fair, Priority and Custom Queuing

### Approvals

Safety: UL 1950, CAN/CSA C22.2, EN60950/A4, No. 950-95  
EMC: FCC Part 15 subpart B Class A, EN55022, EN61000-4-2, EN61000-4-3, EN55024, EN61000-4-4, CISPR16

*Specifications are subject to change without notice.*



Expand Networks  
103 Eisenhower Parkway  
Roseland, NJ 07068  
Telephone: 973-618-9000  
Fax: 973-618-9254  
Toll Free: 888-892-1250  
[www.expand.com](http://www.expand.com)  
info@expand.com

*(Expand Networks, ACCELERATOR 6800, ACCELERATOR 4800, ACCELERATOR 4000, ACCELERATOR 2800, ACCELERATOR 2750, and ACCELERATOR 1800 are trademarks of Expand Networks, Inc. All other trademarks are the property of their respective owners.)*