

Tally

# Expect More

From a Network Color  
Laser Printer.



T8106/T8406

NETWORK/PROFESSIONAL COLOR LASER PRINTERS

- Superior performance at 6 pages per minute color/ 24 ppm monochrome
- Fast processing—200 MHz PowerPC with co-processor
- 1200 DPI Professional Quality Color
- True Adobe® PostScript 3/PCL5c
- Robust monthly workload to 30,000 and 75,000 pages
- Lower cost of operation—5.9¢ for a full color page
- Color output from postcard to legal or 13" x 19"
- Standard Ethernet 10/100 BaseT connectivity
- Tally WebPanel™ and full HP Web JetAdmin compatibility for remote network printer management
- "Plug and Play" CD provides easy installation and setup, as well as Help Videos for operation and troubleshooting

THE TALLY T8106 AND T8406 COLOR LASER PRINTERS PROVIDE THE BEST COMBINATION OF PERFORMANCE, QUALITY, ECONOMY AND REMOTE MANAGEMENT CAPABILITIES FOR CORPORATE NETWORKS AND PROFESSIONAL COLOR USERS...FROM FAST BUSINESS DOCUMENTS AND PRESENTATIONS WITH AUTOMATIC OPTIMIZED COLOR, TO PRECISE, PROFESSIONAL QUALITY COLOR PHOTO IMAGES, PROOFING AND PUBLISHING.



#### Expect More Speed and Quality

At 6 pages per minute for color and 24 pages per minute for monochrome output the T8106 and T8406 give you true network speeds that are 50% faster than other color laser printers in this class. With a one-two processing punch of a 200 MHz PowerPC processor and fast co-processor, combined with fast network connection standard in every T8106 and T8406 model, you won't have to wait for your files to print even on the busiest network.

Both the Tally T8106 and T8406 print at 1200 dpi with optimized screens for stunningly sharp images and crisp color graphics and text.

#### Expect Better Color

The T8106 and T8406 make it extremely easy to get vibrant color output. The default Screen match setting examines the data stream of each print job and applies the proper rendering intent and color correction of text, graphics or photo images, even when all are combined on one page. Each color is matched to the screen individually. For more specific color tuning you can choose Presentations and Photographs.

#### Expect More Versatility

No matter what you need to print, or virtually whatever media you need to print on, the T8106 and T8406 will give you both flexibility and versatility. From post card to legal size documents on the T8106 and up to 13" x 19" on the T8406, Tally color lasers can print on plain paper, transparencies, glossy papers, thick papers, labels, envelopes and even T-shirt transfers, all in brilliant color or crisp black and white.

#### Expect More Satisfaction

Tally's dedication to providing best-in-class products is backed by a nationwide network of sales and service professionals. A one-year on-site warranty is standard with extended warranty options up to three years. A toll-free Product Support number is provided for assistance in set-up and configuration in your most demanding applications. Isn't it time for you to **expect more?**

# The Best Combination of Performance, Quality, Economy and Remote Management.

## EASY TO CHANGE, NO-MESS SUPPLIES

All of the supplies for the T8106 and T8406 are mess-free and easy to change from the top or the front of the printer. Toner cartridges are color-coded and cannot be put in the wrong way. Mono-component toner technology means fewer supplies to monitor and change.



Change all supplies from the top of the printer (left) or the front (right).



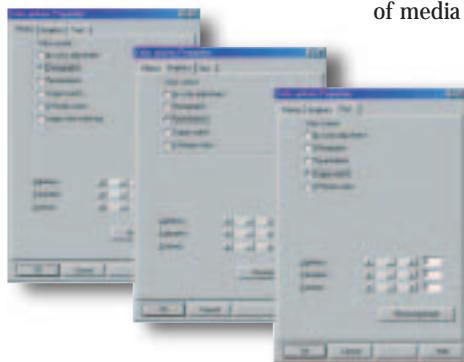
## COLOR TUNED TO YOUR REQUIREMENTS

The T8106 and T8406 give you the option of a powerful custom PCL driver for fast and accurate business documents or an Adobe PostScript Level 3 driver for professional imaging, proofing and publishing requirements. In either case the controller in your Tally printer optimizes the color rendering intent for each item on a page, text, graphics or photos and processes color separately for each item. This intelligent color processing ensures the best color and image quality for every type of document you print.

Color PCL printing is fully automatic when you leave the color setting on "Perfect Tone", or you can manually select the color tuning for each item to be rendered.

One-Button Color Choices:  
Screen match, Photographs,  
Presentations, or No Adjustment  
(for use with ICC profiles).

The PostScript color matching default is Screen match, or you can select, Photographs for sharper and brighter photo images, Presentation for vibrant color graphics and presentations, or for professional color requirements you can select no color adjustment and use the supplied ICC color profiles with Windows ICM or Apple ColorSync® aware applications. Tally supplies profiles for several types of media with specific white points: book or uncoated cover stocks, soft gloss papers, and off-white or newsprint simulations.



The T8106 and T8406 also ship with PANTONE lookup tables for matching specific PANTONE colors.

## VERSATILE PAPER HANDLING—AND A LOT OF IT

The Tally T8106 and T8406 will both print on a variety of media from plain papers and transparencies to thick papers (up to 90 lb. Index), glossy papers (soft gloss laser papers), laser quality labels, envelopes and T-shirt transfer materials.

The T8006 will print standard paper sizes up to legal-size (8.5" x 14") and custom sizes from 4.125" x 8.7" to 8.5" x 11". The T8306 prints standard and custom sizes up to 13" x 19".

Maximum paper input capacity for the T8106 can be expanded to 750 sheets with an optional 500-sheet Lower Feeder Unit (LFU) that mounts beneath the printer, while the T8406 capacity can be increased to 1,250 sheets by adding two 500-sheet LFUs.

## AUTOMATIC TWO-SIDED PRINTING

An Automatic Duplex Unit can be added to the T8106 or the T8406 to provide software selectable, two-sided printing up to 8.5" x 14" or 13" x 19". A Lower Feeder Unit must be installed for Duplex printing and larger paper sizes may require more memory be installed in your printer.



Left: T8106 shown with single LFU and automatic duplex unit.

Right: T8406 shown with two LFUs and automatic duplex unit.

## ADVANCED NETWORK MANAGEMENT

Tally provides the tools and compatibility to make remote network management of the T8106 and T8406 both powerful and simple at the same time.

### Tally WebPanel™

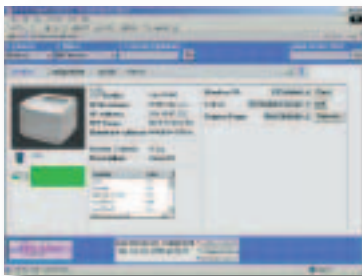
A built-in web server in the T8106 and T8406 provides access from any web browser to WebPanel, a virtual printer front panel that displays printer status, and allows complete configuration of the printers and the network interface.

### Email Notification

The T8106 and T8406 can be setup to send email to a single user or a group of users in the event of paper jams, paper out, and other printer status and error messages including telling you when your job is completed.

### HP Web JetAdmin Compatibility

The T8106 and T8406 are fully compatible with Hewlett-Packard's popular web-based network management tool for discovering, configuring, monitoring and troubleshooting all printers on a network.



Tally WebPanel™ displays virtual control panel in any Browser Window Tally T8106 discovered by HP Web JetAdmin without an IP address previously set.



Shown with optional duplexer and 500-sheet cassette.

		T8106	T8406
<b>Technology</b>		Electro-photographic semiconductor laser	
<b>Speed</b> <i>(Pages per minute)</i>	<b>Monochrome</b>	24 PPM	
	<b>Black + 1 Color</b>	12 PPM	
	<b>Black + 2 Colors</b>	8 PPM	
	<b>4 Colors</b>	6 PPM	
<b>Time to First Page</b>	<b>Monochrome Plain Paper</b>	16.5 Seconds	19 Seconds
	<b>Color Plain Paper</b>	24 Seconds	34 Seconds
<b>Warmup Time</b>		Maximum 240 Seconds	Maximum 210 Seconds
<b>Resolution (Standard)</b>		600 x 600 DPI	
<b>Resolution (Maximum)</b>		1200 x 600 DPI	1200 x 600 DPI
<b>Processor</b>		PowerPC 740 200 MHz. Plus Co-Processor 66 MHz	
<b>Hard Disk Drive</b>		Optional 6 GB Hard Disk Drive (supports Multi-Print function, plus downloaded fonts, forms & macros)	
<b>Memory (MB)</b>		64 MB; Maximum 256 MB; 64 MB or 128 MB DRAM DIMMs	
<b>Drivers</b>		Windows 95/98, Windows NT 4.0, Macintosh	
<b>Printer Languages (Standard)</b>		Adobe PostScript 3; PCL5c emulation	
<b>Language Switching</b>		Yes	
<b>Interface Switching</b>		Yes	
<b>All Ports Hot</b>		Yes	
<b>Fonts</b>		136 PostScript 3; PCL 45 Scalable, 9 Bitmapped	
<b>Interfaces (Standard)</b>		10BaseT/100 Base TX Ethernet; IEEE 1284 Bi-directional parallel	
<b>Network Protocols</b>		TCP/IP (LPD/FTP), IPX/SPX (Netware®), NetBIOS/NetBEUI (Windows Peer to Peer), EtherTalk®	
<b>Network Management</b>		Tally WebPanel: Virtual Control Panel from any Web Browser; E-mail notification of job completion/error status HP Web JetAdmin compatibility (discovery, configuration, printer status)	
<b>Paper/Handling</b>	<b>Paper Sizes</b>	Letter, Legal, Executive, A4, B5-JIS, B5-ISO, #10 Commercial and International DL envelopes, Custom to 8.5" x 11.7"	Letter, Legal, Executive, Ledger, A3W (13" x 19"), A3, A4, B4, B5-JIS, B5-ISO, Envelopes, Custom to 13" x 19"
	<b>Paper Types</b>	Plain paper, transparencies, thick stock, soft gloss laser papers, labels (Avery 5260), laser-quality transfer materials, & envelopes	
	<b>Paper Weight</b>	Plain Paper: 18 to 24 lbs. Bond (Simplex and Duplex); Thick Stock: Simplex 43 lbs Bond (90 lbs Index); Duplex 28 lbs. Bond	
	<b>Duplexing</b>	Optional Automatic Duplex	
	<b>Std. Bins</b>	1	
	<b>Standard Input Capacity</b>	250 Sheets	
	<b>Optional Input Capacity</b>	500 Sheet Lower Feed Unit Letter/A4 (Max. 1)	1,000 Sheets, 2 – 500 Sheet Lower Feeders (up to 13" x 19")
	<b>Output Capacity</b>	250 Sheets face down	
	<b>Advanced Printing Features</b>	Multi-Print (Mopier) Booklet Printing (Requires Optional Hard Drive); Custom Watermark & Overprint	
<b>Maximum Print Area</b>	Letter: 8.1" x 10.6"; Legal: 8.1" x 13.6"	Ledger: 10.6" x 16.6"; A3W: 12.6" x 18.6"	
<b>Color Matching</b>		Automatic default Screen Match: Tuned CRDs for Photographs, Graphics and, Presentations, Custom ICC Profiles (Offset Book, Soft Gloss, Off-White); PANTONE Colors	
<b>Acoustics db(A)</b>		Standby: Less than or equal to 48 dB(A); Operation: Less than or equal to 55 dB(A)	
<b>Toner (Average)</b>		Black: 12,000 pages; C,M,Y 7200 pages each	Black: 14,000 pages; C,M,Y 8500 pages each
<b>OPC Belt Cartridge (Average)</b>		60,000 Color Planes (15,000 pages color; 60,000 pages mono)	120,000 Color Planes (30,000 pages color; 120,000 pages mono)
<b>Fuser Oil Bottle (Average)</b>		12,000 pages	
<b>Fuser Cleaning Roller (Average)</b>		12,000 pages	
<b>Waste Toner Pack (Average)</b>		18,000 pages	
<b>Energy Star Compliant</b>		Yes	
<b>Duty Cycle (Pages per month)</b>		Up to 30,000 (50% Color; 50% Monochrome)	Up to 75,000 pages Monochrome or 18,750 pages Color
<b>Physical</b>	<b>Base Unit</b>	19.7" (W) x 16.1" (H) x 20.5" (D); 86 lbs.	24.2" (W) x 16.5" (H) x 21.3" (D); 101 lbs.
	<b>With Lower Feeder Unit</b>	19.7" (W) x 21.9" (H) x 20.5" (D); 89.6 lbs.	24.2" (W) x 22.0" (H) x 21.3" (D); 125 lbs.
	<b>With Lower Feed Unit plus Duplexer</b>	19.7" (W) x 23.8" (H) x 23.8" (D); 107 lbs.	24.2" (W) x 24.0" (H) x 24.4" (D); 151 lbs.
<b>Power Requirements</b>		120V, 60 Hz./220-240V, 50-60 Hz.	
<b>Power (Operating/Standby/Sleep)</b>		600W/260W/30W (1350W Max Operating)	
<b>Environmental</b>	<b>Temperature</b>	Operating: 50° F – 90.5° F; Non-Operating: 41° F – 95° F	
	<b>Humidity</b>	Operating: 20% – 80% Non-Condensing; Non-Operating: 10% – 80% Non-Condensing	
<b>Jam Rate/MTBF/MTTR</b>		One per 2,000 pages/5,000 Hours/30 Minutes or Less	
<b>Standard Warranty/Extended Warranty</b>		One Year Onsite/2 & 3 Years Onsite	
<b>Options</b>		Lower Feeder Unit (with 500-sheet Cassette); Automatic Duplexer, Standard Cassette (250 sheet: Letter/A4); Legal Cassette (250-sheet); Lower Feeder Cassette (500-sheet: Letter/A4); 6 GB Hard Disk Drive 64 MB & 128 MB DIMMs	

Note: Life of all consumables is based on 5% coverage of a page or 5% of each color (CMYK)

Specifications are subject to change without notice.



**Tally**

Tally Printer Corporation  
8301 South 180th Street  
Kent, WA 98032 USA  
www.tally.com